

ICAO - VISUAL APPROACH CHART

AD 2 LIRI 5-1

SCALE 1:250.000



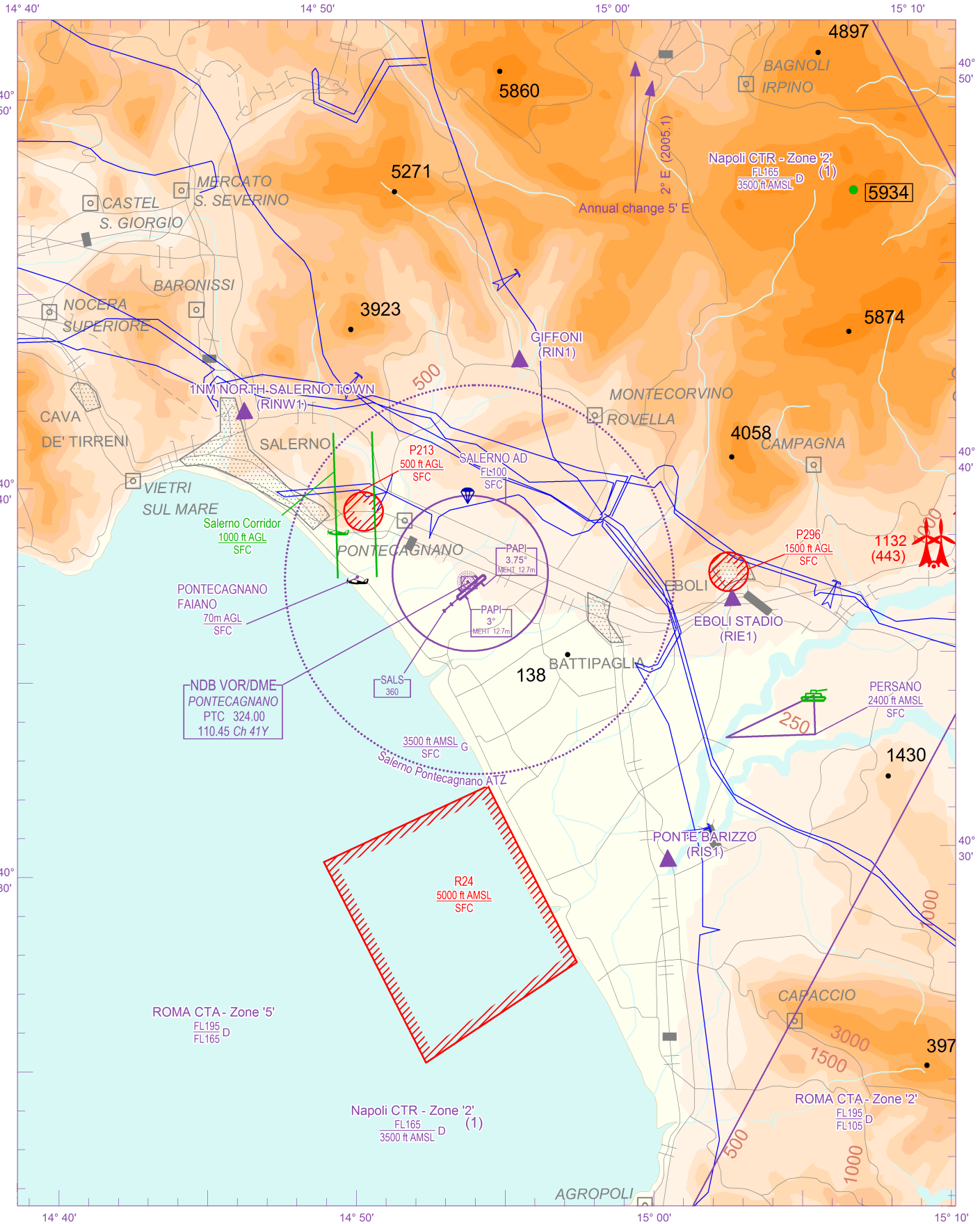
FIS Roma Information 129.575
 APP Napoli APP 124.350 (120.950)
 APP Napoli Radar 124.350 (120.950)
 AFIS Salerno Aerodrome INFO 119.175

AD ELEV

119

LIRI

SALERNO/PONTECAGNANO



CHANGE: UPDATED CHART

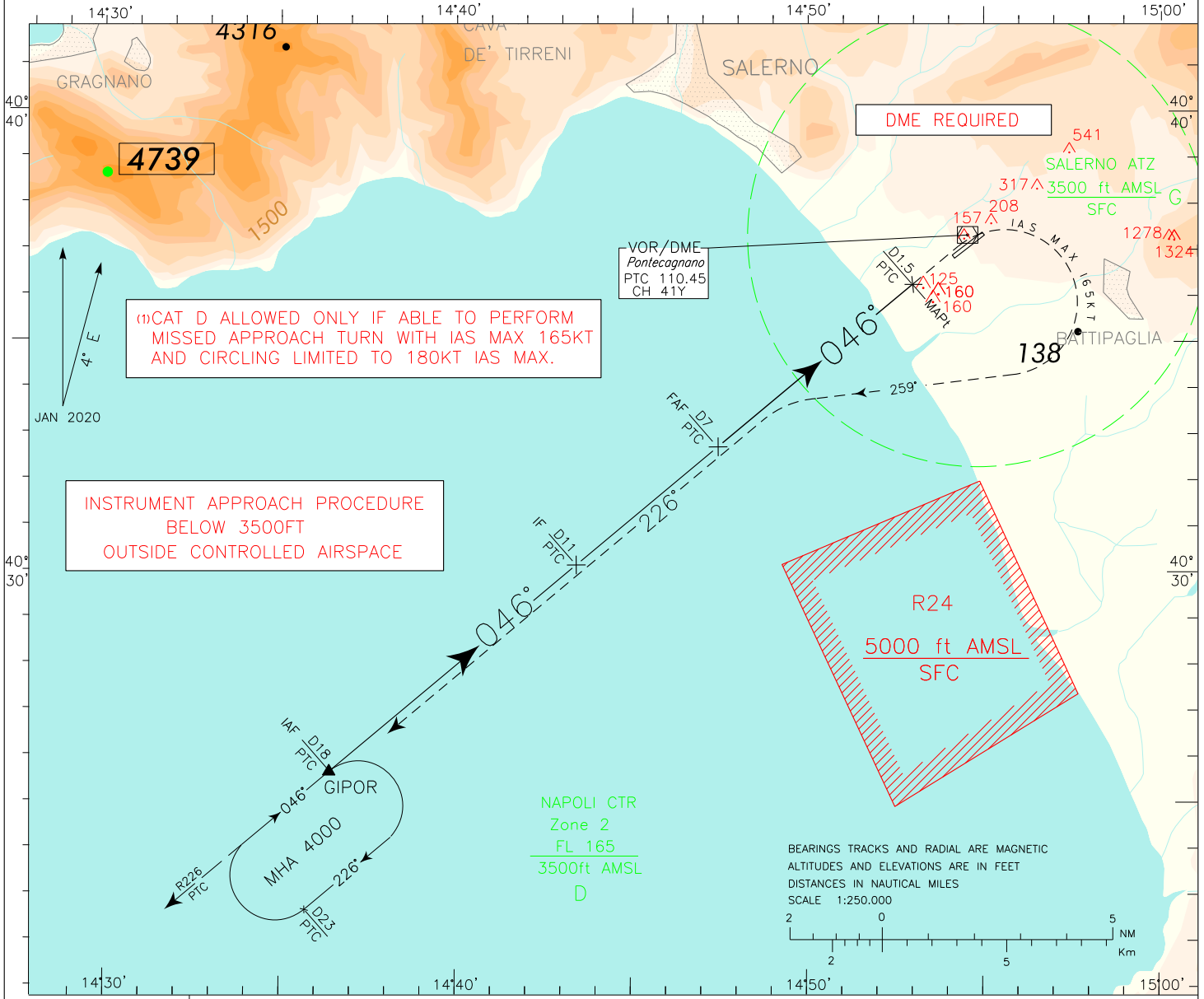
AIRSPACE CLASSIFICATION See AIP ENR 1.4	REMARK	WARNING
TRANSITION ALT 8000 FT	(1) Entire chart is included in Napoli CTR Zone 2	
ELEV AND ALT IN FT IF NOT OTHERWISE INDICATED		

ICAO – INSTRUMENT APPROACH CHART

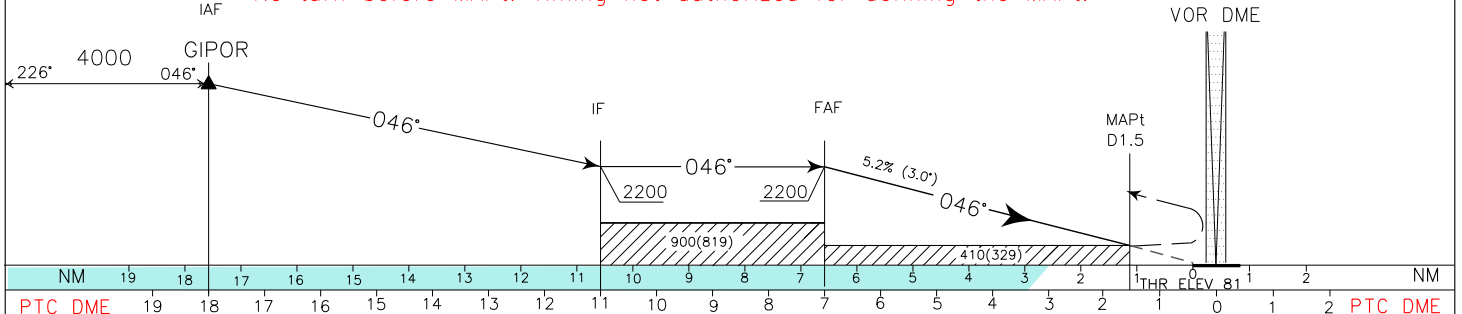
AD 2 LIRI 5-3

REMARK: final track off set 2.22° from RWY centerline. RWY centerline intercepted 4886 m before THR 05	APP Napoli APP/Radar	124.350 (120.950)	AD ELEV	L R	SALERNO/PONTECAGNANO VOR RWY 05
	AFIS Salerno Aerodrome INFO	119.175	119		

AMDT 7
ED.6
DOC.8168
MAG VAR UPDATED



TRANSITION ALT 8000 MISSED APPROACH: At MAPt, climbing to 4000 ft, turn right (IAS MAX 165kt) on TR 259° to join RDL 226 PTC VOR to GIPOR holding pattern. No turn before MAPt. Timing not authorized for defining the MAPt.



OCA (OCH)		A	B	C	D (1)	CIRCLING (1) 	GS	FT PER MIN	PTC DME	ALT (HGT)	MNM SECT ALT	
STRAIGHT IN APPROACH	VOR	650 (569)						80	420	6	1885(1804)	
		100	525	5	1570(1489)							
		120	630	4	1255(1184)							
		140	735	3	948 (867)							
CIRCLING		650 (531)	860 (741)	2030 (1911)	(1)				625 (544)			

FIX/POINT	Coordinates (WGS84)
IAF (GIPOR)	40°25'37.7"N 014°36'25.0"E
IF	40°30'08.2"N 014°43'26.5"E
FAF	40°32'42.7"N 014°47'28.0"E
MAPt	40°36'14.5"N 014°52'59.7"E