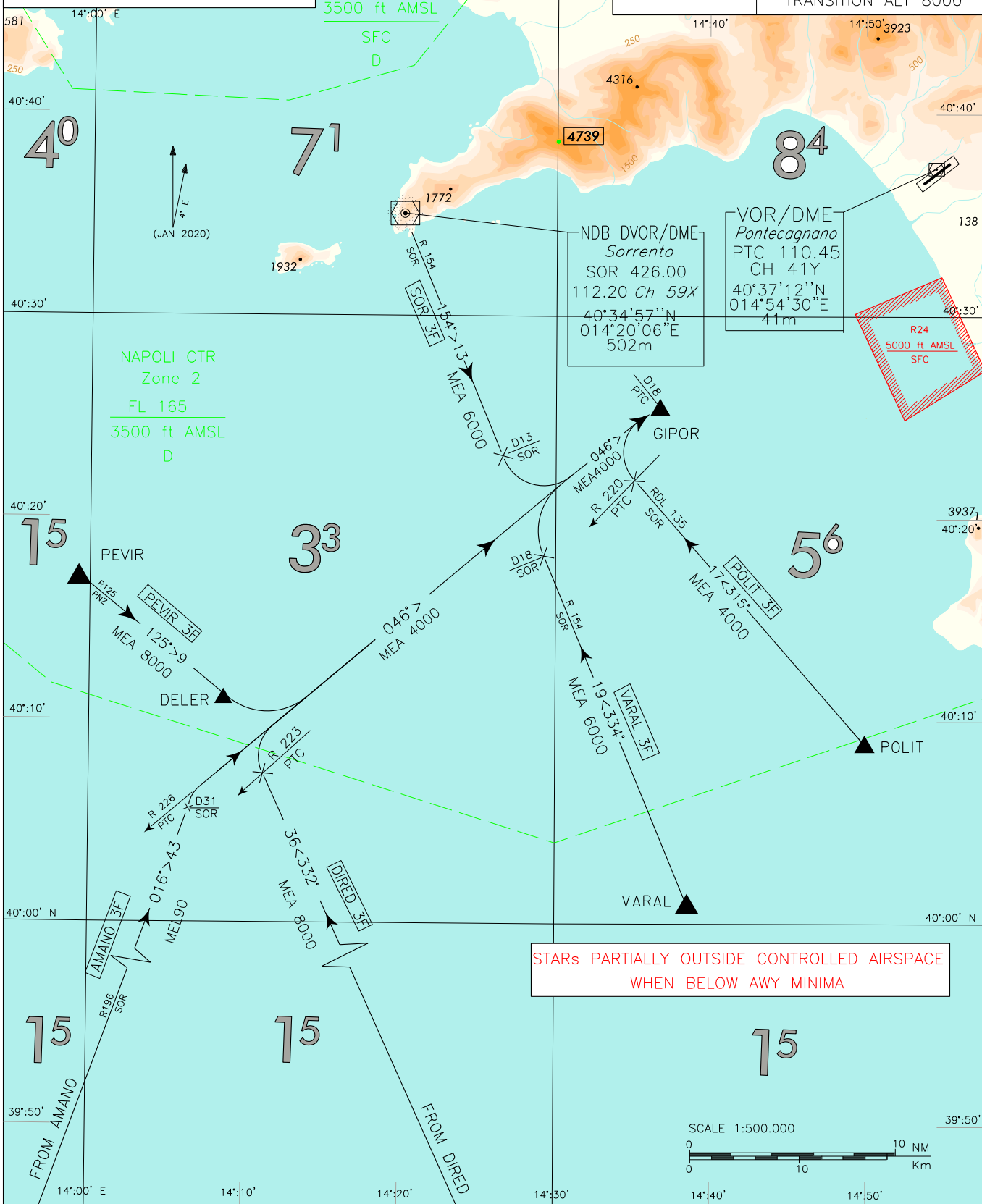


FREQUENCIES	
APP Napoli APP/Radar	124.350 (120.950)
AFIS Salerno Aerodrome INFO	119.175

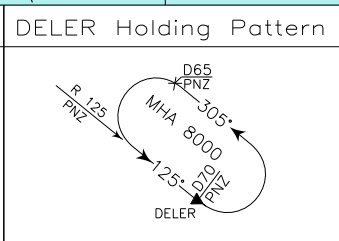
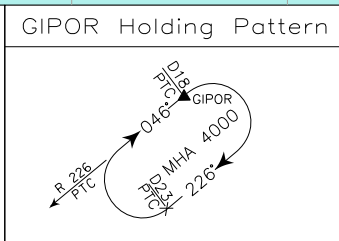
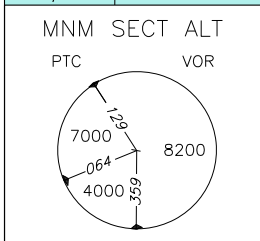
NAPOLI CTR
Zone 1
3500 ft AMSL
SFC
D

STAR	SALERNO/ PONTECAGNANO
	TRANSITION ALT 8000



CHANGE: MAG VAR UPDATED and RENUMBERED STAR

STARS PARTIALLY OUTSIDE CONTROLLED AIRSPACE
WHEN BELOW AWY MINIMA



AIRSPACE CLASSIFICATION SEE AIP ENR 1.4
LEGEND
STAR
NOT TO SCALE

AMANO 3F

AMANO – TR 016° (RDL 196 SOR VOR) until 31 NM SOR DME, turn right until joining RDL 226 PTC VOR (TR 046°) bound to GIPOR.

MEL/MEA: AMANO – RDL 196/31 NM SOR VOR/DME: FL 90; RDL 196/31 NM SOR VOR/DME – GIPOR: 4000 ft

DIRED 3F

DIRED – TR 332°, crossing RDL 223 PTC VOR turn right until joining RDL 226 PTC VOR (TR 046°) bound to GIPOR.

MEA: DIRED – INT TR 332°/RDL 223 PTC VOR: 8000 ft; INT TR 332°/RDL223 PTC VOR – GIPOR: 4000 ft

PEVIR 3F

PEVIR – TR 125° (RDL 125 PNZ VOR) – DELER, then turn left until joining RDL 226 PTC VOR (TR 046°) bound to GIPOR.

MEA: PEVIR – DELER: 8000 ft; DELER – GIPOR: 4000 ft

POLIT 3F

POLIT – TR 315° (RDL/QDR 135 SOR VOR/NDB), crossing RDL 220 PTC VOR turn right until joining RDL 226 PTC VOR (TR 046°) bound to GIPOR.

MEA: POLIT – GIPOR: 4000 ft

SOR 3F

SOR VOR/NDB – TR 154° (RDL/QDR 154 SOR VOR/NDB) until 13 NM SOR DME, then turn left until joining RDL 226 PTC VOR (TR 046°) bound to GIPOR.

MEA: SOR VOR/NDB – RDL 154/13 NM SOR VOR/DME: 6000 ft; RDL 154/13 NM SOR VOR/DME – GIPOR: 4000 ft

VARAL 3F

VARAL – TR 334° (RDL/QDR 154 SOR VOR/NDB), at 18 NM SOR DME turn right until joining RDL 226 PTC VOR (TR 046°) bound to GIPOR.

MEA: VARAL – RDL 154/18 NM SOR VOR/DME: 6000 ft; RDL 154/18 NM SOR VOR/DME – GIPOR: 4000 ft

Intenzionalmente bianca

Intentionally left blank